

GOLD STAR HILLCLIMBS

According to the records that I have [compiled by Geoff Potter] we held our first Gold Star Hillclimb on 02 Dec 1961. These records go through until 1969/70 and I will show the first three place getters in each event below.

Exciting times for the club which had been holding hillclimbs since 1956 and this lifted the status of our events becoming part of a National Championship.

So lots of work was put into Puhipuhi, clearing blackberries and scrub from the spectator area above the hairpin, clearing the pit area of scrub and making the road surface as smooth as possible. My memory of the Puhipuhi surface was these embedded stones in places which gave the car a hard time.

On the day a tent with a PA system was erected in the pits and fingers were crossed that the phone and timing system would behave.

We stopped using Puhipuhi in 1967 and the Gold Star hillclimb shifted to McLeans Road Waipu. By now our organization was a bit more low key but we still put on a good event which attracted all the serious competitors from down South who wanted to win the NZ Championship. For example the McLeans Road event in 1968 attracted 39 competitors of which 8 came from outside the club.

The furthest travelled was Steve Boreham from Rotorua.

Puhipuhi

02 Dec 1961

Ken Sagar, Cooper Norton, 49.6.
Peter Elford, Cooper Bristol, 51.0.
Graham Harvey, Offenhauser Spl, 51.5.

14 Dec 1963

Roy Lyme, Cooper Porsche, 49.0.
Jim Boyd, Cooper Holden, 50.1.
Lyn Armstrong, Aeolus V8 Spl, 53.15

17 Oct 1964

Roy Lyme, Cooper Porsche, 50.1
Bill Stone, Cooper J.A.P, 50.75
Steve Boreham, Cooper BSA, 51.2

30 Oct 1965

Jim Boyd, Lycoming, 50.6
J. Pettit, Mini Max, 51.5
Steve Boreham, Cooper BSA, 52.0

15 Oct 1966

Jim Boyd, Lycoming, 47.85
Steve Boreham, Cooper BSA, 49.4
Doug Bremner, VW Porsche, 51.5

22 Oct 1967

Jim Boyd, Lycoming, 50.4
Steve Boreham, Cooper BSA, 51.0
Arthur Hopkins, Cooper Triumph, 53.4

McLeans Road

27 Oct 1968

Steve Boreham, Cooper BSA, 63.2
Brian Skudder, RGR Ford, 63.8
Doug Bremner, VW Porsche, 63.9

25 ?? 1969

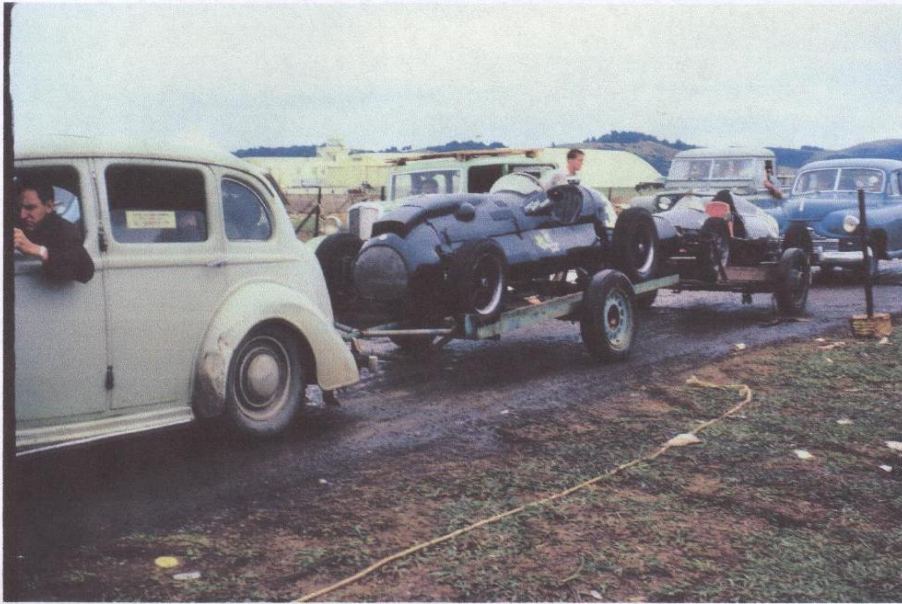
Steve Boreham, Cooper BSA, 62.4
Doug Bremner, VW Corvair, 64.0
Ian Cullen, Cooper Imp, 64.6

Some jottings about the above people. Peter Elford and John Grant used to tow their two cars on two trailers behind a Humber Super Snipe. Graham Harvey [Offenhauser Special ex- Northland Special] and Jim Boyd finished up battling in heroic races for the NZ Sports Car Championship Harvey in an Elfin and Boyd in a Lola.

Steve Boreham was a very serious, determined racer who was supported at events by his wife Isobel who I think is still involved in Motor Sport administration.

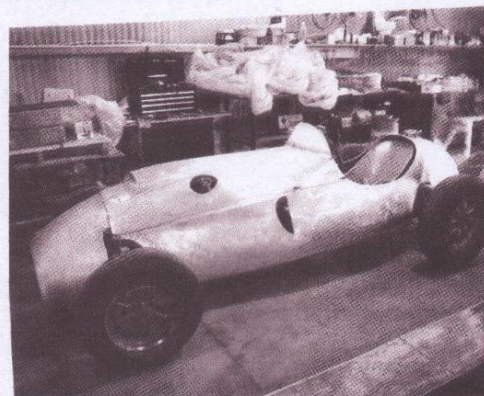
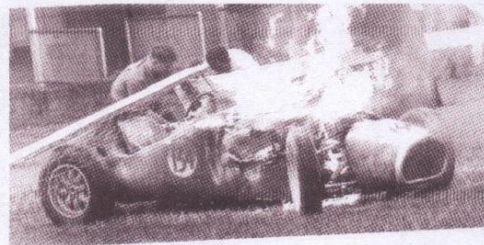
And this innocuous looking VW sedan with Porsche and later Corvair engine ably driven by Doug. Bremner saw a lot of single-seaters off. Interesting how the times see-saw up and down. Jim Boyd at Puhipuhi doing a 50.6 then a 47.85 then a 50.4 and Steve Boreham being slower on his next trip to McLeans Road. Puhipuhi in particular, the surface could vary in a big way. I am sure the drivers in Rallies today also find stages slower [or faster] than they found them the previous year. It all adds to the fascination of the sport.

Brian Skudder



This is how Peter Elford & John Grant used to get their two cars to events. this photo at Ardmore.
The mind boggles when visualising this entourage going up and then down the Brynderwyns.

The Cooper Holden that came 2nd at Puhipuhi in 1963 driven by Jim Boyd. It came to a fiery end at Pukekohe and the bottom photo shows it near the end of it's restoration in the Sth. Island

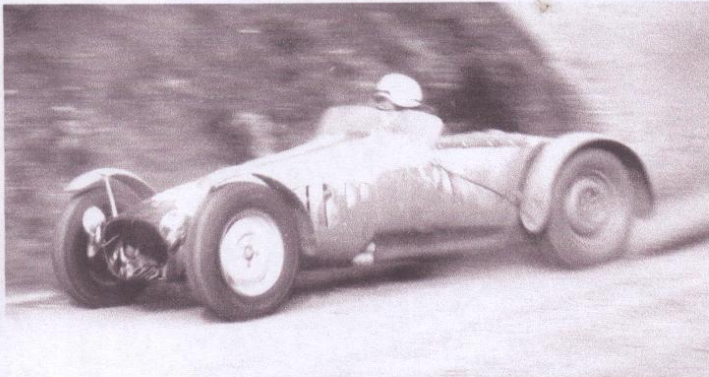




Peter Elford Cooper Bristol

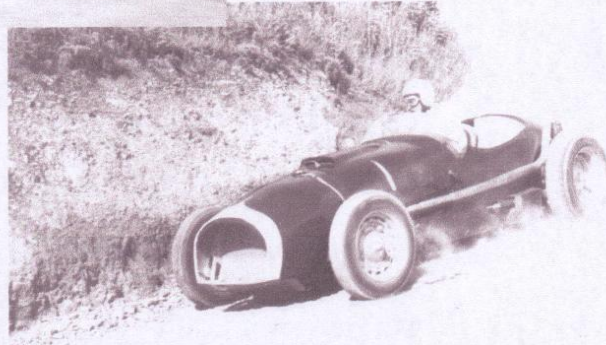


Ken Sagar Cooper Norton



Jim Boyd Lycoming

Lyn Armstrong Aeolus



Steve Boreham
Cooper BSA